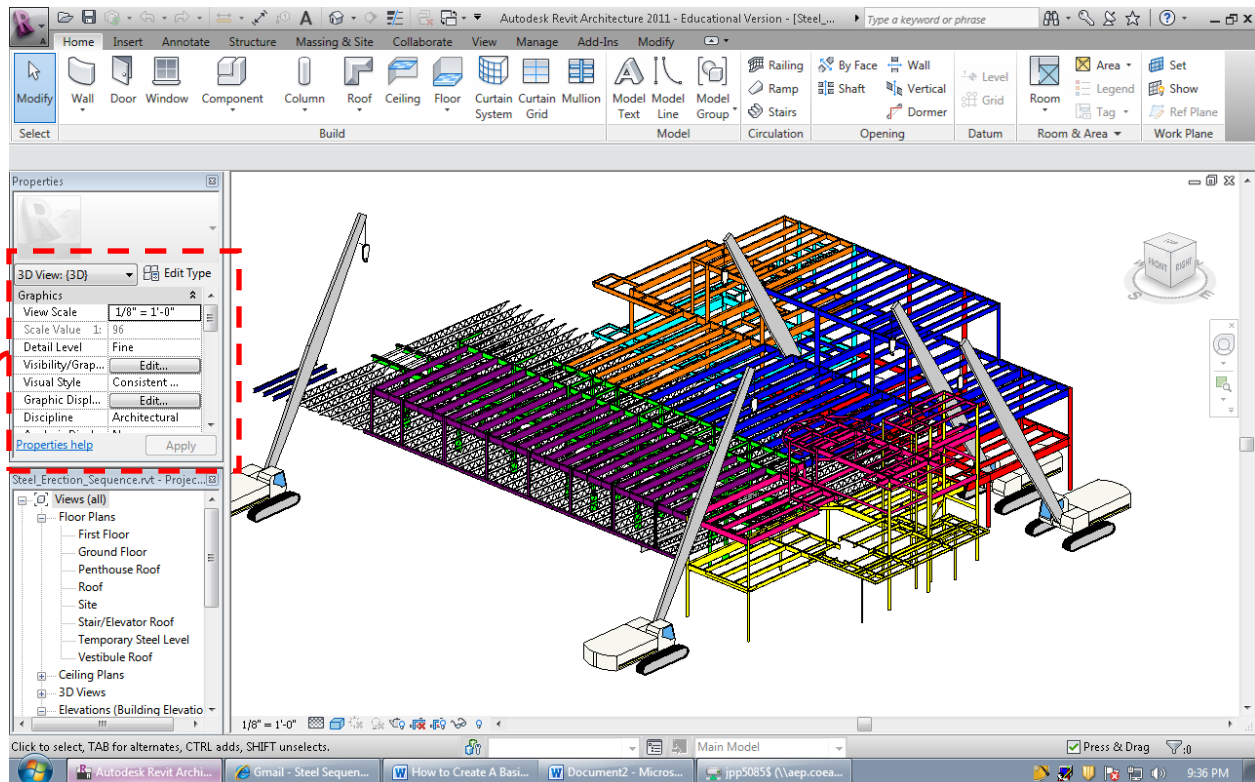
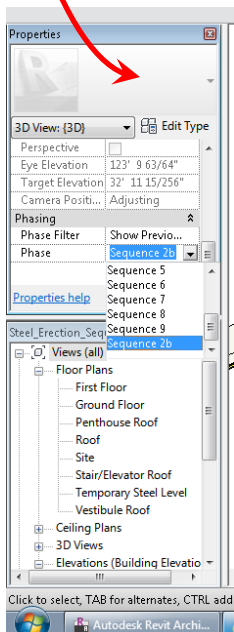


How to Assign Preliminary Phasing to Components in Revit

Introduction: Creating preliminary phasing plans in Revit may be helpful for a construction manager to show a visual representation of phasing plans before a Revit model is fully completed and ready to export to Navisworks. Below is a picture for a steel erection sequence that is represented by different colors.



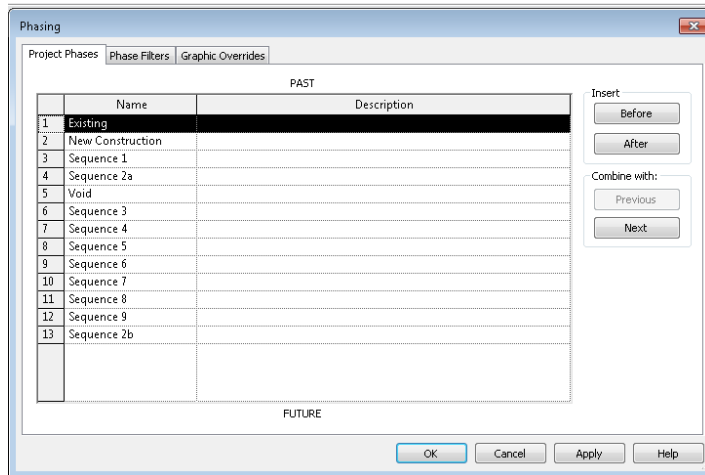
1. Revit, by default, gives the user the ability to show phasing in terms of **new construction, demolition or existing**. These attributes can be given to a component (i.e. a beam or column in this case) by going to the properties toolbar shown in the left side of the above screen.



2. Under the **properties toolbar → phasing tab** you can see the default phases mentioned below. To assign one of the phases to a component, **click on the component and assign the phase under the pull down menu under “phasing”**.

Note: If you change the component to **existing** the component **will turn a gray color and lose its edges** to become an existing condition. If you change a component to **demolition**, it will turn red and become **semi-transparent**. **By default, all components when added to a model are considered “new construction” under phasing.**

- To create new phases, as shown in the diagram left, go to the **Manage Tab→Phasing palette→Phases**. When you click on **Phases**, the diagram below will appear on the screen. This example has multiple phases already created corresponding to the colors of the members shown in the model.



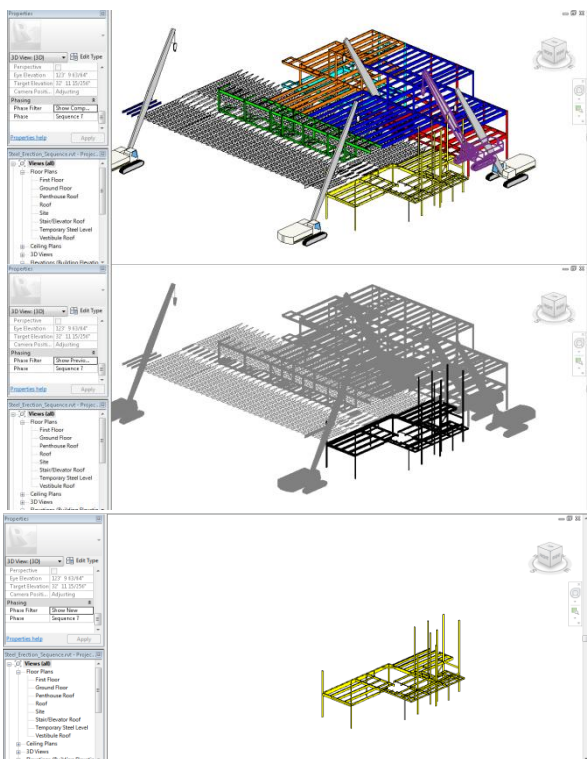
- To create phases simply click **insert→ before or after** depending on when the phase is to occur. It is important to insert phases at the correct place because there is no option to move the phase once it's been created. Now that you have created your phases, click **ok** and return to the model.

- In the model, click multiple components at once or individual and assign appropriate **phases** using the **properties toolbar**.

Now for the powerful visual tool that has been created...

- Under the **properties toolbar**, under **phasing**, there is a **phase filter**. This allows the user to show phases using different techniques to show how a building or certain sequence will come together. Under the phase filter there are multiple options that used with the phase drop down menu create preliminary phasing models. There are **three options** to focus on: 1. **Show Complete**, 2. **Show Previous + New**, 3. **Show New**. Below are these three diagrams labeled.

Note: All diagrams are based on sequence 7 which is in the middle of the sequence to show progression in the sequence.



Show Complete – Shows all the sequences completed at the end of the sequence specified. This shows the model in “new construction” model like you would view the model normally.

Show Previous + New – Shows all the sequences completed but **bolds** the current phase that is selected under **phase** in the properties toolbar.

Show New – Shows only the current phase specified under the **phase** drop-down menu. Clearly shows work to be done during specified phase.